

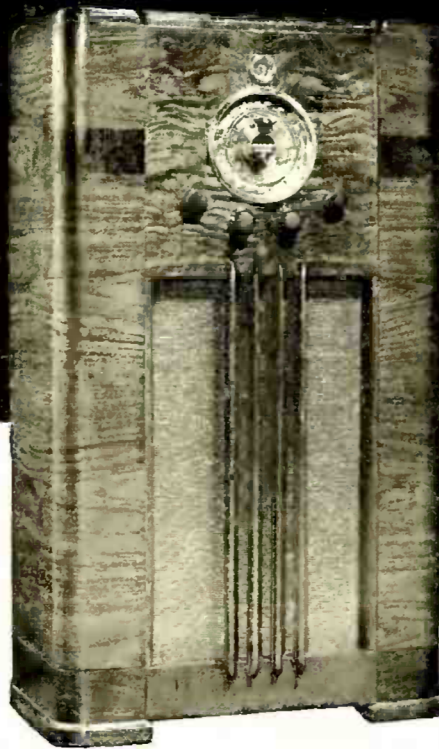
ANOTHER CROSLLEY RADIO SENSATION

THE CROSLLEY DYNATROL 11

ELECTRIC TUNING

11 TUBES

\$89.95



Crosley Dynatrol—Model 1127—11 tubes . . . 3 bands, 525-22,000 Kc. . . . Receives American, foreign, amateur, aviation, police, and ships-at-sea broadcasts. Dynatrol motor-drive electric tuning. Latest type IRIS tuning indicator. Mirro-Dial, edge lighted, gold reflector-type with graduations fused on the convex glass. 10" electro-dynamic speaker. Tone compensation on broad automatic volume control.

Continuously variable tone control. 10 watts output. Extra large cadmium plated chassis. Power supply noise filter. Push-pull pentode output. Greater selectivity with local-distance switch. More beautiful cabinet with sloping front panel of stump walnut, sliced walnut top and half-round walnut pilasters, decorated with stump walnut bands. Hand rubbed finish. Cabinet dimensions: 40" high, 24 $\frac{1}{4}$ " wide, 12 $\frac{5}{8}$ " deep.

Once again Crosley crashes through with another sensational radio leader from the 1938 All-Star Radio line . . . an eleven-tube console model with electric tuning for only \$89.95. Like every other model in the Crosley All-Star line, the Dynatrol 11 is by a wide margin the biggest radio value in its own price class. Like all the other All-Star models, too, it is a natural sales leader that has all America "Swinging to Crosley." Have your Crosley Distributor demonstrate the startling Dynatrol Electric Tuning feature, as well as the score of other powerful selling features that distinguish this and other Crosley All-Star models. See and hear these models today. Stock and sell them . . . and join the profitable "Swing to Crosley."

(Prices in South and West slightly higher)

THE CROSLLEY RADIO CORPORATION - CINCINNATI POWEL CROSLLEY, Jr., President

Home of "the Nation's Station"—WLW—500,000 watts—70 on your dial

YOU'RE THERE WITH A CROSLLEY